

OpenStreetMap US Annual Report

2025



openstreetmap.us



Fostering the growth
and impact of OpenStreetMap
across the United States

a 501(c)(3) nonprofit

Table of Contents

1	Messages from our Leadership
2	Mission & Vision
3	15 years of OpenStreetMap US
4	Our Team (Staff & Board)
5	Our Team (Advisory Council)
6	Tech Updates
7	Program Updates
8	Charter Projects
9	Community Projects
10	Virtual Gatherings & Advocacy
11	Conferences
12	Membership
13	Financials
14	Get Involved

Messages from our Leadership



Maggie Cawley

Executive Director

Over the past 6 years as Executive Director, I have witnessed the incredible passion and dedication of our staff, board, and community. A commitment that has sustained us through 15 years, including a challenging 2025 marked by

uncertainty and hardship across our community. Despite these pressures, OSM endured. OSM is more than a basemap or a community of mappers, it is a transformative force shaping how data is created, shared, and used. As we look ahead, this endurance and passion will play an increasingly vital role in our nation's data future. Thank you for your support, and cheers to 15 more years!



Matthew Whilden

Board President (2025-2026)

What an outstanding 2025! We celebrated our 15th anniversary, launched the Microgrants Program, welcomed YouthMappers as a Charter Project, and expanded our data stack to include Layercake and the Tileservice. Our working groups keep

expanding, and there's never been a better time to jump in. Thank you to everyone who contributed through mapping, donations, and community enthusiasm. Happy mapping!

Mission...



We support the OpenStreetMap project in the United States through education, fostering awareness, ensuring broad availability of data, continuous quality improvement, and an active community.

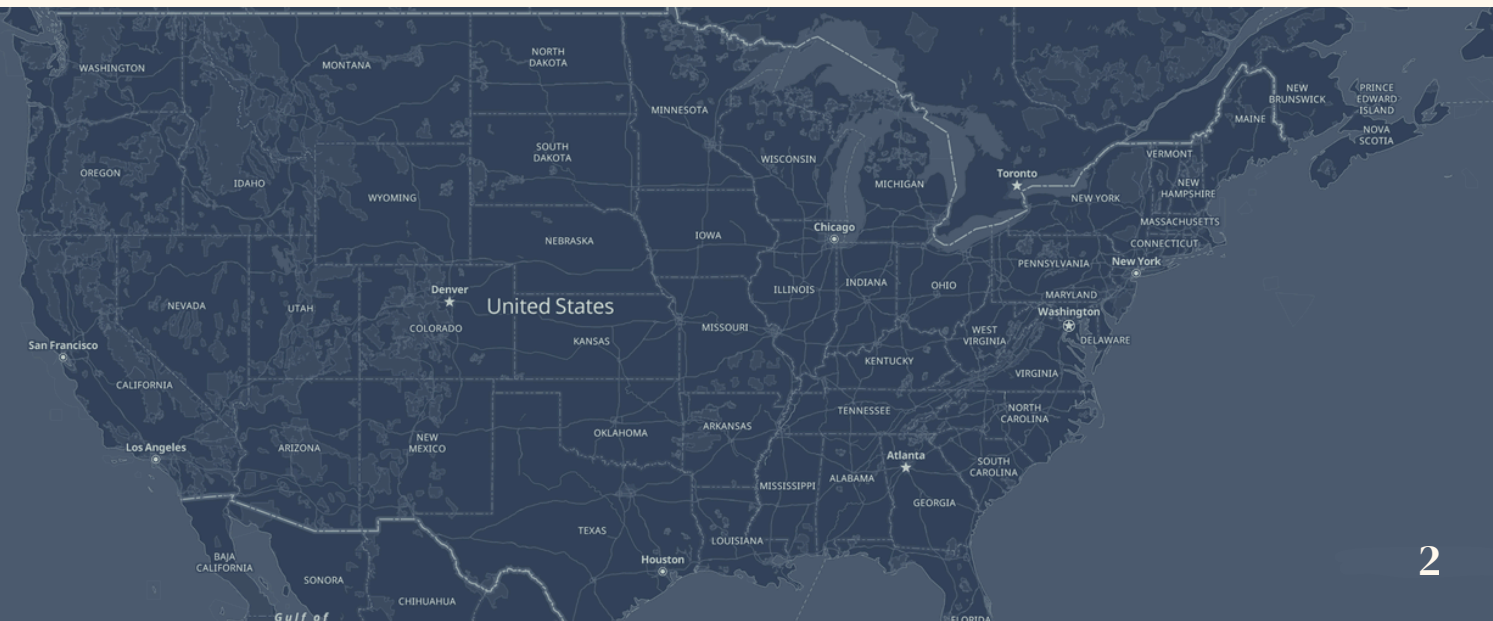
Established in 2010

OpenStreetMap US, a 501(c)3 nonprofit organization, is advancing geospatial data democracy by catalyzing collaborative action around OpenStreetMap between individuals, government agencies, nonprofits, corporations, and academia. Since 2010, OSM US has worked to provide the community the connections, tools and support they need to use the power of OpenStreetMap to improve their world by mapping their world.

& Vision

2025-2026 Strategic Priorities

- Amplify OSM US's position as a **leader in the tech nonprofit space** by conveying impact through storytelling, conference participation and name recognition
- Fortify the **financial footing** of the organization through continued diversification of revenue sources
- **Advance accessibility** to OSM data by developing new tools and services that improve the end user experience
- **Clarify pathways for involvement** to strengthen community participation in the organization with a focus on communications and programming
- **Foster the growth and diversity** of the OSM US community, with a focus on curating accessible and welcoming spaces for newcomers and underrepresented groups





15 Years of OpenStreetMap US

OpenStreetMap US began as a completely volunteer-run group of OSM enthusiasts, then 501(c)(3) nonprofit, then a local chapter of the OpenStreetMap Foundation with one paid employee. 15 years later, there is now a small team of staff members working alongside the volunteer Board of Directors and Advisory Council. Today, OSM US is still directed, motivated, and inspired by the volunteer community behind OSM in the United States.



The group photo at State of the Map US 2013 in Washington, DC

OSM US at a Glance

2010

The first State of the Map US



OSM US incorporated as a 501(c)(3) nonprofit

2012

Martijn van Exel hosts the first OSM US Mappy Hour

2019

Maggie Cawley becomes Executive Director

2020

OSM US becomes an official chapter of the OSMF

2022

OSM US launches memberships for organizations using OSM data



Maggie Cawley addressing attendees at State of the Map US 2025 in Boston, Massachusetts

Between 2010 and 2025, the OpenStreetMap US community has consisted of **9000+ Slackers** chatting away about all things OSM, **13 in-person conferences** across the US, **55+ online Mappy Hours** covering practically every topic in the mapping world, **31 total board members**, and many more mappers, developers, data users, and believers in the power of open geographic data.

The Staff



Jake Low
Software Developer
Seattle, WA



Alyssa Castronuovo
Program Coordinator
Richmond, VA



Nellie Blair
Administrative Coordinator
Richmond, VA

Maggie Cawley
Executive Director
Richmond, VA



The Board of Directors

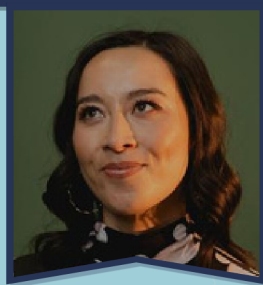


Matthew Whilden
President
Redmond, WA

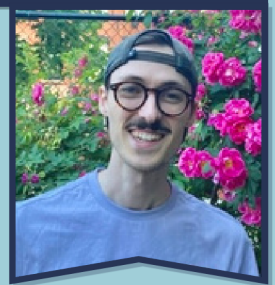


Levente Juhász
Vice President
Fort Lauderdale, FL

Jazzy Smith
Secretary
Brooklyn, NY



Harrison Devine
Treasurer
Bellevue, WA/Tucson, AZ



Kiri Carini
At Large
Tucson, AZ

Quincy Morgan left the OpenStreetMap US Staff as Technical Lead in May of 2025. Many thanks to Quincy for his three years of dedication to the team! ♥



The Advisory Council

The Advisory Council was convened in August of 2025 to compliment the member-elected Board of Directors, consisting of volunteers with expertise in the education, legal, political, and financial fields. Advisors are selected by the OSM US Executive Director, approved by the Board of Directors, and serve two year terms. The Advisory Council holds no fiduciary or organizational power over the organization, but instead provides professional connections and insights, opening doors for new opportunities for OSM US.



Bill Dollins
Washington, DC



Brandon Liu
New York, NY

Carrie Stokes
Washington, DC



Dr. Diane Fritz
Boulder, CO



Kevin Pomfret
Washington, DC



Dr. Lee Schwartz
Alexandria, VA

Tech Updates

Layercake

In April 2025, OSM US launched [Layercake](#), a set of **thematic extracts of OSM data** in cloud-native file formats like GeoParquet. Layercake aims to make OSM data more accessible to the broader GIS community, removing the complexities of processing OSM PBF data while preserving OSM's rich tagging model.

OSM US Tasking Manager

Our [Tasking Manager](#) fork received substantial maintenance in 2025, including upgrading to the **latest versions of the iD and Rapid editors**, updating login to use the OAuth2 method by osm.org, and improving compatibility with OSM Sandbox projects.

The OSM US Tileservice

The [Tileservice](#) provides vector map tiles and related resources which are needed to create OSM-based maps. Originally built to power Americana and other OSM US projects, it was made **generally available in September 2025**, to help hobbyist developers create new tools and maps for the benefit of the OpenStreetMap community.

Website Updates

Our website (openstreetmap.us) saw many improvements in 2025: A **new events calendar page**, an OSM GeoWeek section (replacing the old osmgeoweb.org website), faster page loading, and improvements under the hood to make updating the site easier for OSM US staff.

Program Updates

OSM US Microgrants

Launched in April 2025, the OSM US Microgrants program invests directly in the people growing the OSM community across the United States. Grants of up to \$500 support **local meetups, conference travel, and educational initiatives** for OSM US members. Applications are always open and reviewed on a rolling basis. In it's first year, the program supported OSM Boston's first meetup and GeoDC!

Mapillary Camera Grant 2.0

In partnership with Meta, the OSM US & Mapillary Camera Grant 2.0 refreshed a popular program from 2023. The grant equips mappers with 360° cameras to capture street-level imagery for OSM and Mapillary. In 2025, grantees captured **over 3 million images**, helping fill gaps in pedestrian and bicycle infrastructure data in cities nationwide.

40
cameras
shipped
across
the US

Working Groups

OSM US hosts Working Groups on a regular cadence to convene stakeholders and interested parties across a wide variety of topics in the OSM ecosystem. Working Groups are always free to attend and occur over Zoom. This year saw the start of the **Maintainers Working Group**, a space for professional and hobbyist developers to share knowledge and troubleshoot together. Other Working Groups active in 2025 include: The Education WG, Government WG, Pedestrian WG, Imagery WG, Trails WG, Governance WG, and Collaborator Sync. Our Pedestrian, Trails, Government, and Education Working Groups now have quarterly newsletters so attendees can stay in the loop.

Charter Projects

OSMCha

OSMCha saw many technical improvements in 2025: a new and faster backend for creating augmented diffs, improved map visualizations on the frontend, and a command line tool for visualizing augmented diffs from any source (e.g. Overpass queries).

YouthMappers

This year, OSM US welcomed YouthMappers as a Charter Project! YouthMappers is a global community of student-lead mapping chapters at the university-level. The project celebrated its 10th anniversary in 2025 and supported 200+ chapters.

OpenHistoricalMap

OpenHistoricalMap vector tiles are roughly 90% smaller and faster thanks to improvements made in 2025. Options to log in via OSM and Wikimedia make it easier than ever to become a contributor, and OpenRailwayMap switched historical railway coverage from OSM to OHM.

MapRoulette

In 2025, OSM US and the MapRoulette team made numerous improvements to MapRoulette's performance (making project info, map layers, and leaderboards load faster), as well as modernizing and simplifying the frontend codebase to facilitate community contributions.

Maintenance of MapRoulette and OSMCha were originally supported by dedicated funds for Charter Projects development. This funding ran out in mid-2025 and was not renewed. In [January 2026](#), OSM US decided to absorb MapRoulette and OSMCha as core programs to continue support under our operations budget.

Community Projects

OSM Americana

A number of improvements to the bespoke map style were made in 2025: Tribal boundaries now appear on the map, road shields have been digitized in more countries in South America, Europe, Africa, and Asia, as well as more local shields in the U.S., and Diplomat is available for localized labels on any MapLibre map.

OSM Merge

OSM Merge is a software package designed for data conflation of official sources of rural road and trail data into OSM. In 2025, it was utilized to improve data in the national forests of Colorado, New Mexico, and Utah. Improvements have also been made in the conflation of Bureau of Land Management highway data.

SliceOSM

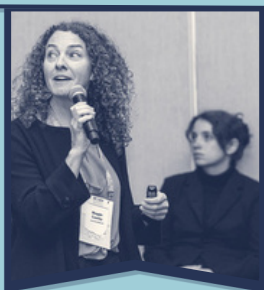
SliceOSM lets you draw an area on the map and download an up-to-the-minute extract of OSM data for that area in OSM PBF format. SliceOSM was launched in 2024, and served hundreds of users per month in 2025. The project saw technical improvements to the UI and the backend, making it easier and more reliable to use.

2025 marks one year of OSM US Community Projects. This program, in tandem with our Charter Projects, allows OSM US to support the vibrant community of volunteer developers working to improve accessibility and completeness of OSM data.

Community Projects get a modest monthly stipend and logistical support from OSM US staff, while Charter Projects receive legal and financial support through a fiscal sponsorship model.

Advocacy

In 2025, the OpenStreetMap US team presented about the work of the OSM community, advocated for open data, gave keynote addresses, convened community, or tabled at the following events:



- FOSS4G NA
- NYC Open Data Week
- CNG Conference
- Outdoor Rec. Roundtable
- AGS Natl. Mapathon
- PA GIS Conference
- International Trails Summit
- FedGeoDay
- GeoGov Summit
- NSGIC Annual Conference
- SatCamp
- GIS Pro of the Rockies
- Geography 2050
- Esri Federal UC
- MN GIS/LIS
- GeoInt
- CUGOS
- TUgis

Virtual Gatherings

Mappy Hours

2025 was a fantastic year for Mappy Hours, OSM US's free virtual event series. with over **140 attendees joining 6 different Mappy Hours**. Highlights from the year include a meet and greet with map animator Jason Boone, and two different sessions lead by the Pedestrian Working Group.

OSM GeoWeek

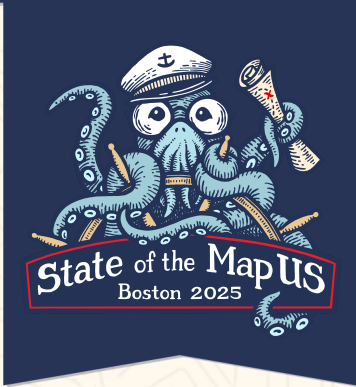
OSM GeoWeek was on November 17th to 22nd. As the OSM community celebrated around the globe, OSM US hosted a revamped central events calendar.

Local Chapters and Communities Congress

The 2025 LCCC was held in March with 50+ attendees from around the world. We had updates from the OSMF board and 9 OSM global communities (US, PL, IT, UG, HOT, BE, UK, KE, UN), plus an open discussion. Recorded talks are available.

Conferences

State of the Map US



The 13th State of the Map US took place over June 19th to 21st in **Boston, Massachusetts**, drawing over 300 attendees. Many things made SOTMUS 2025 one for the books:

- The conference theme, **“Charting the Course,”** included a dedicated track highlighting recent efforts in mapping for pedestrian mobility.
- OSM US hosted one of our largest scholarship cohorts to date, with **16 scholars** from 5 countries and 9 states.
- On Saturday, attendees celebrated **15 years of OpenStreetMap US** with a birthday party, complete with cake.

Previous conferences were held in Atlanta, Portland, San Francisco, Washington DC, New York, Seattle, Boulder, Detroit, Minneapolis, Tucson, Richmond, and Salt Lake City.

Mapping USA

2025 marked the 5th year of Mapping USA, our free virtual conference, held over January 24th and 25th. The weekend consisted of over **500 registrants, 33 sessions, and 8 hours** of mapping-related content.



Mapping USA began as Connect 2020, an effort to convene the mapping community at a time when in-person gatherings were not possible. Mapping USA continues to bring a quality, accessible option to OSM US’s event calendar.

Membership

Membership is critical to the success and sustainability of OpenStreetMap US and is open to both individuals and organizations. Members support the maintenance and development of critical tech in the OSM ecosystem (such as OSMCha and MapRoulette), innovative and community-led projects and tools, OSM US Working Groups, virtual and in-person events, and programs like the Mapillary Camera Grant and State of the Map US Scholarships.

If you were an OSM US member at any point in 2025 – **thank you!**

Individual Members

328
individual
members
in 2025

Individual members are volunteer mappers, educators, students, professionals, and open data advocates. Membership starts at \$15 a year for students. For members looking to make a larger investment, we introduced our Sustaining Member tier in 2025.

"I want to contribute to the map and be involved in the organization. I am a GIS professional and love the idea of being a part of this world." ~ OSM US Member

Organizational Members

14
organizational
members in 2025

Organizational members represent companies, educational institutions, nonprofits, and government agencies. Many organizational members are involved in OSM US Working Groups and share a commitment to making open geospatial data available.

Strategic Level

Department of Transportation,
Bureau of Transportation Statistics
Esri
National Park Service

Technical Level

AllTrails
American Geographical Society
Meta

Associate Level

Mapbox
MassGIS
National Geospatial Intelligence Agency
TomTom

Supporter Level

Ann Arbor District Library
Development Seed

Community Level

BetaNYC
Kendall County, Illinois

Financials

Revenue

Conference Registrations	\$69,063
Conference Sponsorships	\$145,250
Donations	\$22,524
Grant Revenue	\$5,550
Organizational Memberships	\$293,000
Individual Memberships	\$12,506
Service/Fee Income	\$99,035
Charter Project Donations*	\$60,000
Total Revenue	\$706,928

Expenses

Events	\$88,043
Program Expenses	\$3,864
Staff & Benefits	\$338,182
Contracted Services	\$15,127
Admin & Operations	\$47,116
Charter Project Expenses*	\$26,076
Total Expenses	\$518,408

**Charter Project budgets are managed separately from OSM US, and Charter Project steering committees are responsible for fundraising for their project.*

Join the **OSM US** Community

Become a Member

OSM US can only do all of the things mentioned in this annual report because of our members.

[Join today.](#)

Join the OSM US Slack

Connect with over 8,000 mappers, surveyors, data consumers, and general OSM enthusiasts.

[Get Slackin'](#)

Read our Monthly Newsletter

Get the most important OSM US updates straight to your inbox (we won't spam you).

[Subscribe](#)

Join a Working Group

Anyone is welcome to join a Working Group, whether you show up to every meeting or just a few each year.

[Sign up](#)

Donate

All donations are tax-deductible, and allow OSM US to continue developing the tech and programming mappers care about.

[Donate](#)

Start Mapping

OSM US has a few resources to help you start editing the map, including videos on the OSM US Youtube channel.

[Learn more](#)

Join an Event

Whether that's Mapping USA, State of the Map US, one of our Mappy Hours, or a worldwide OSM event, you're invited!

[Gather with us](#)